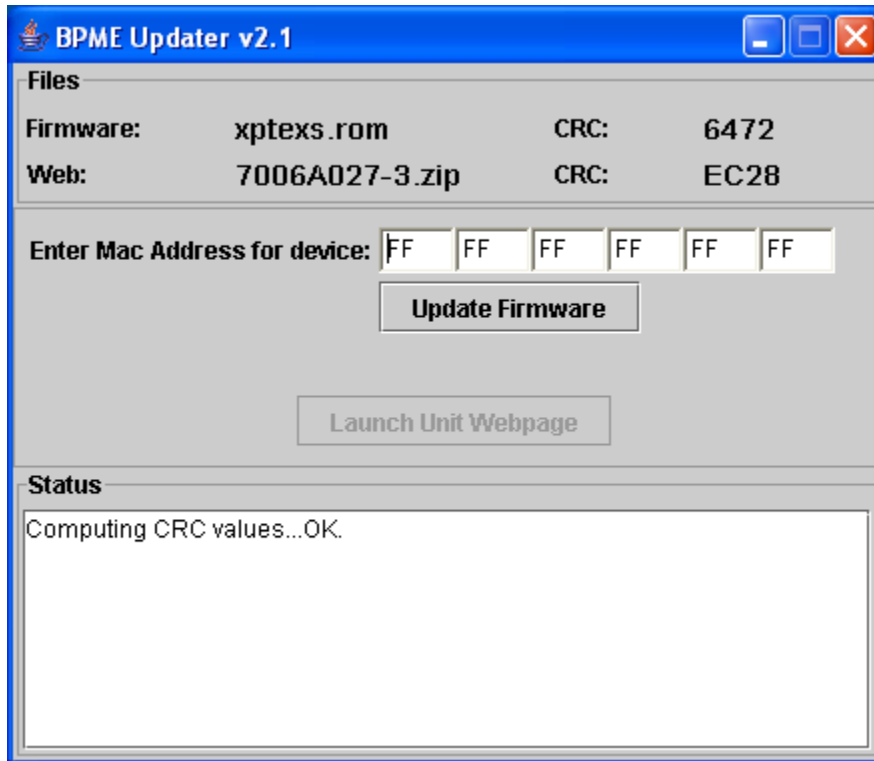


BPME Xport Upgrade instructions (over the network)

- 1) Make sure the BPME is attached to your computer with a crossover cable. You can also connect both the computer and the BPME to a hub/switch that is not connected to any other networks or computers.
- 2) Open the BPME cover and take note of the MAC address written on top of the xport ethernet connector should be 00-20-4A-xx-xx-xx.
- 3) Make sure you have Java runtime v4.2.13 or later installed on your computer. (Version 6 is not recommended as it seems to have some issues)
- 4) Open BPMEUpd.jar. It should look similar to below.



- 5) Enter the MAC Address for the device that you took note of above.
- 6) Press the Update Firmware button.
- 7) The status window should update and eventually indicate a successful update. It will recommend you open the webpage to set your IP preferences.
- 8) Press the "Launch Unit Webpage" button.
- 9) The unit's webpage will open, and you can do any further configuration you wish of BPME settings or network settings. It is strongly recommended that you change the connection settings on the Admin page so that you can easily connect to the unit in the future over the network. If you are not planning on connecting to it in the near future over the network, at least set check the Use DHCP checkbox and save settings.